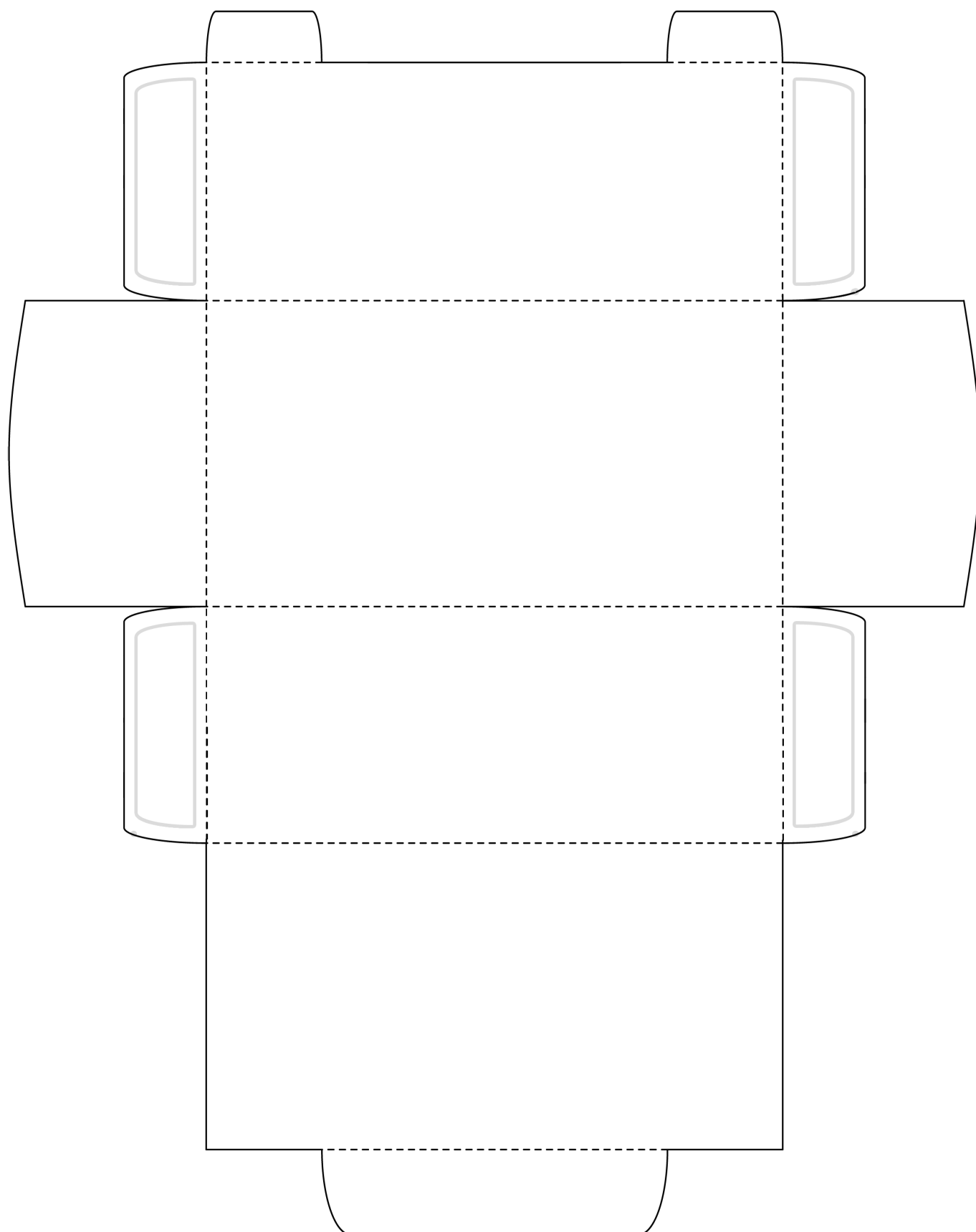


# Ancient Egyptian sarcophagus template

This template can be used to support the 'Make a model to demonstrate the Egyptian Burial Process' lesson.



## Decorating your Sarcophagus

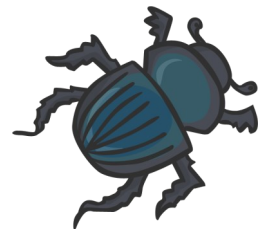
Think carefully about which way round each side will be when it is made up!

The Eye of Horus was put on the side of the sarcophagus, near the head, so the mummy could look out.



A false door was painted on the sides so the mummy's spirit could leave and re-enter the sarcophagus.

A scarab beetle was often painted on the sarcophagus as it was a good luck symbol of rebirth.



God and goddesses were painted or carved into the sarcophagus.

Strips of hieroglyphics told the story of who was inside, and gave them information that might be helpful in the afterlife.

It could also warn off grave robbers!

